



PO Box 98, Newcastle, WY 82701  
307-746-2083  
www.ArnoldRealty.com

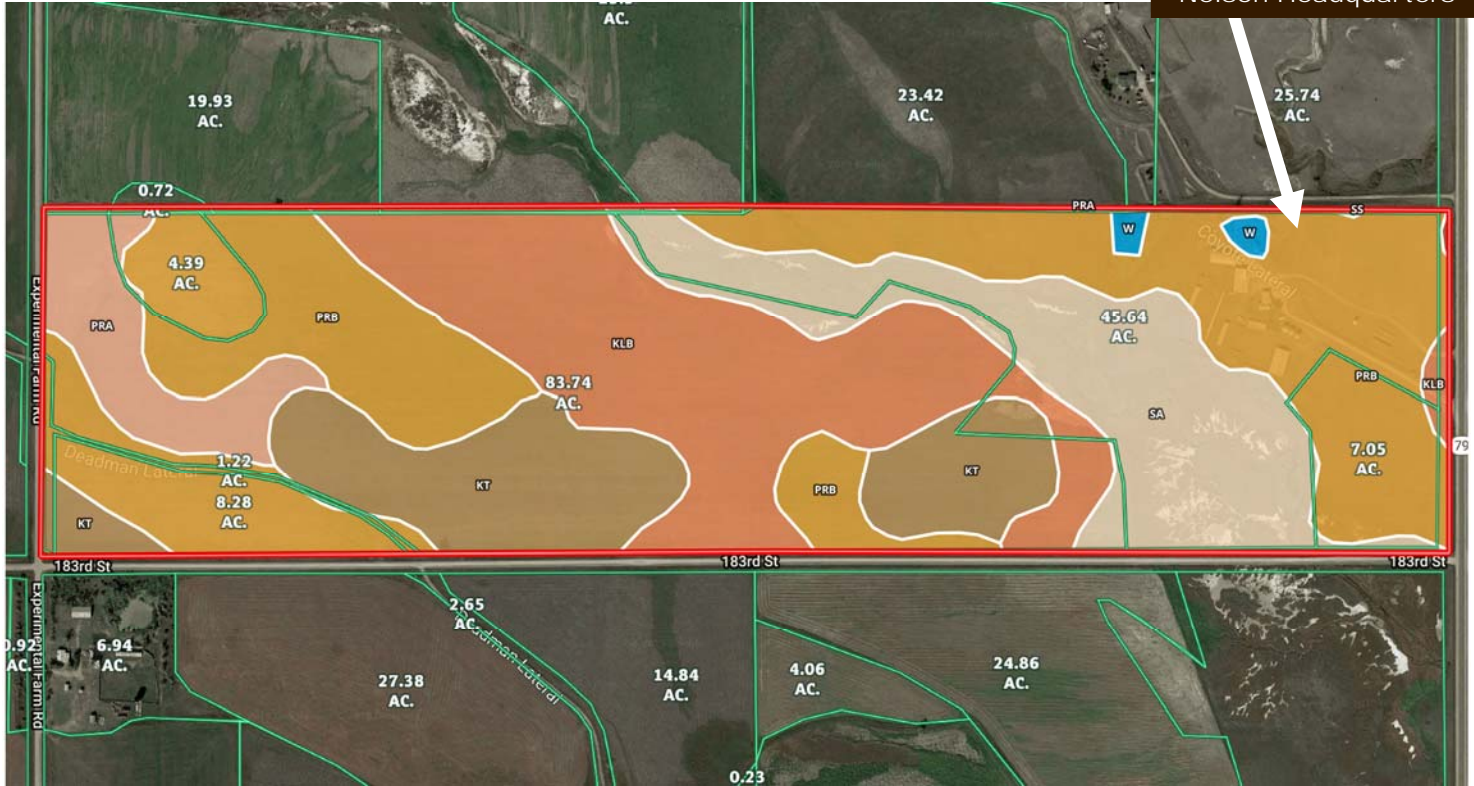
# Nelson Headquarters

Butte County, South Dakota

This is a visual aid only. The accuracy of this map cannot be guaranteed. The boundaries are approximate and reflect the legal description as shown in the County records, NOT the location of fences. The legal description and fence lines may differ. Further research by prospective Buyers regarding the actual property boundaries is required. This is not a survey. This map is not to scale.

Aerial Map - T9N, R6E

Nelson Headquarters



SOIL CODE	SOIL DESCRIPTION	ACRES	%	CAP
Kt	Kyle clay, terrace	23.1	14.97	4s
Ss	Stetter clay, channeled	0.0	0.03	6w
Sa	Sage-Slickspots complex, 0 to 15 percent slopes	25.7	16.6	7s
PrB	Pierre clay, 2 to 6 percent slopes	60.0	38.8	4e
LcE	Lismas clay, 10 to 40 percent slopes	0.1	0.05	7e
W	Water	0.9	0.58	8
PrA	Pierre clay, 0 to 2 percent slopes	8.9	5.75	4s
KIB	Kyle clay, 2 to 6 percent slopes	35.9	23.22	4e
TOTALS		154.6	100%	4.52

## Capability Legend

Increased Limitations and Hazards

Decreased Adaptability and Freedom of Choice Users



'Wild Life'	•	•	•	•	•	•	•	•
Forestry	•	•	•	•	•	•	•	•
Limited	•	•	•	•	•	•	•	•
Moderate	•	•	•	•	•	•	•	•
Intense	•	•	•	•	•	•	•	•
Limited	•	•	•	•	•	•	•	•
Moderate	•	•	•	•	•	•	•	•
Intense	•	•	•	•	•	•	•	•
Very Intense	•	•	•	•	•	•	•	•

## Grazing Cultivation

(c) climatic limitations (e) susceptibility to erosion

(s) soil limitations within the rooting zone (w) excess of water