

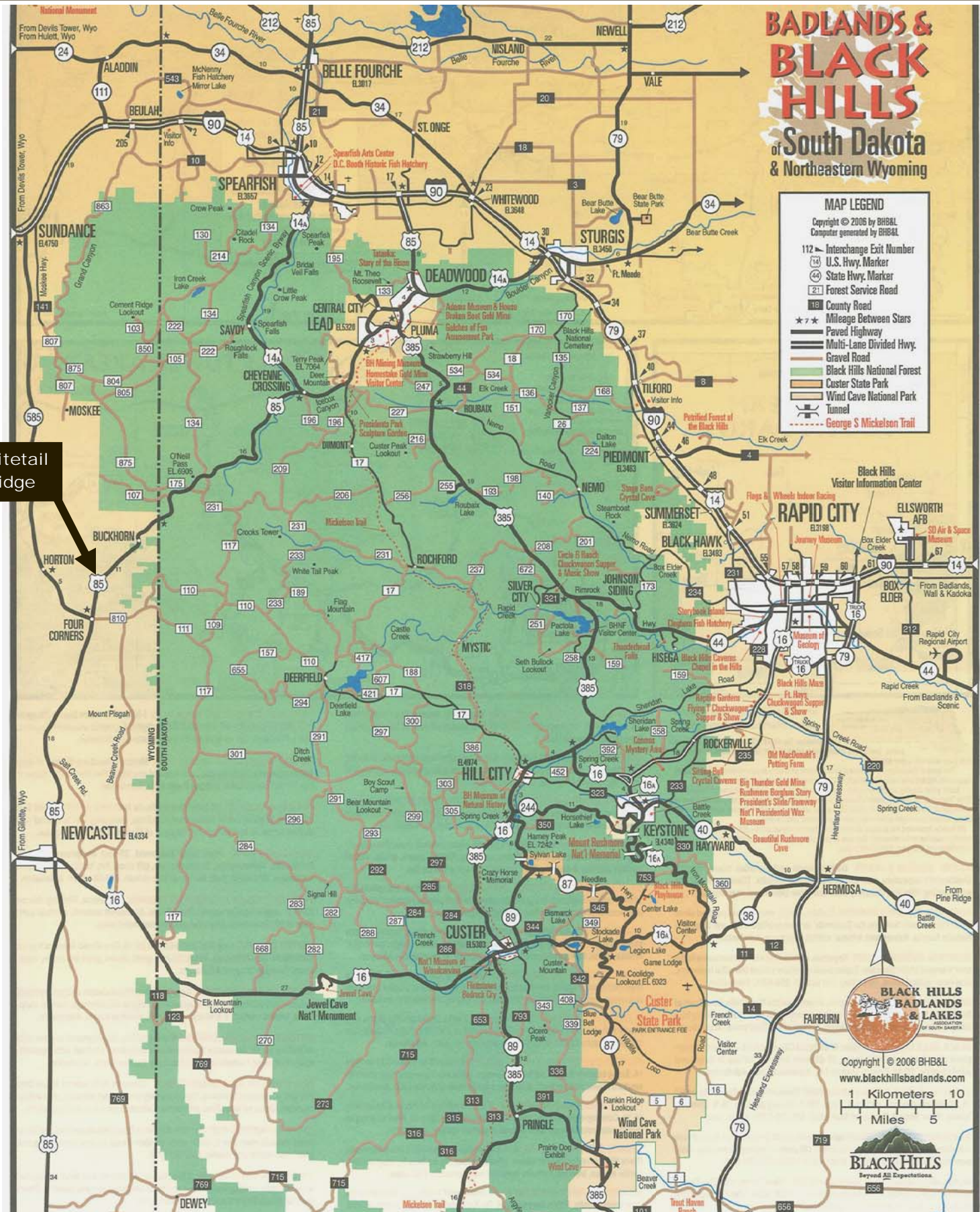
BADLANDS & BLACK HILLS

of South Dakota & Northeastern Wyoming

MAP LEGEND
Copyright © 2006 by BHB&L
Computer generated by BHB&L

- 112 Interchange Exit Number
- 14 U.S. Hwy. Marker
- 49 State Hwy. Marker
- 21 Forest Service Road
- 18 County Road
- ★ ★ Mileage Between Stars
- Paved Highway
- Multi-Lane Divided Hwy.
- Gravel Road
- Black Hills National Forest
- Custer State Park
- Wind Cave National Park
- Tunnel
- George S. Mickelson Trail

Whitetail Ridge



BLACK HILLS BADLANDS & LAKES
ASSOCIATION OF SOUTH DAKOTA

Copyright © 2006 BHB&L
www.blackhillsbadlands.com

1 Kilometers 10
1 Miles 5

BLACK HILLS
Beyond All Expectations